

SPIRE

Life Science Solutions

Vivarium - Animal Care Products



Table of Contents

Vivarium Solutions Introduction...3

STERILIZATION

Steam Sterilizers - Large Volume...4-5

Steam Sterilizers - Small Volume...6-7

CAGE PROCESSING

Cage and Bottle Washers...8-9

Cage and Rack Washers...10-11

Tunnel Washers...12-13

Bedding Dispensers...14-15

Bottle Fillers...16-17

Decontamination Chambers...18-19

Misting Tunnels...20-21

PATHOLOGY/NECROPSY

Necropsy Solutions...22-23

Warming Cabinets...24

Stainless Steel Solutions...25

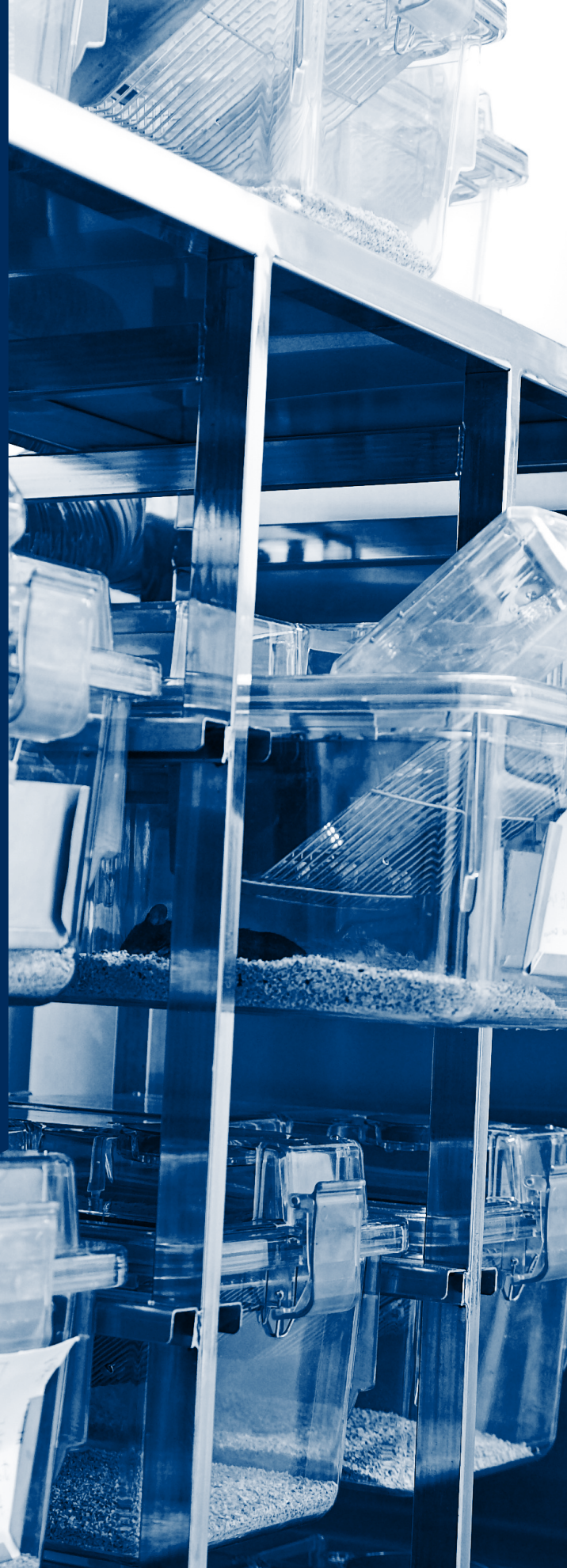
Cold Rooms...26-27

UPGRADES - PM, TRAINING AND SUPPORT

Upgrades...28-29

Installations...30

PM, Training and Support...31



Vivarium Solutions

The safety of the research species, animal care takers and researchers in a vivarium facility is of utmost importance. To achieve effective research studies, animal care cannot be compromised. SPIRE Integrated Solutions provides the animal care equipment and solutions to facilitate an efficient, productive, and cost-effective vivarium facility. SPIRE Cage Washing and Sterilization Systems, as well as material handling, necropsy, and stainless steel products, are specifically designed for continuous operation, meeting all user applications and production requirements.



Equipment Planning

SPIRE can layout Washing and Sterilization Equipment in your Cage Wash Design, working closely with your architect and Lab Planners to ensure proper functionality and placement, thus eliminating any interference or loss of production capabilities. Layout drawings can be provided in CAD and 3D Formats, as well as individual equipment Revit files.

Throughput Analysis

SPIRE can provide a throughput analysis which will determine correct chamber sizes and configuration of washing and sterilization equipment, meeting the required number of cages to be processed per day and or week.

**All SPIRE Animal Care Products are designed
and manufactured in North America**

Benefits

- All equipment is manufactured by one vendor in North America
- Local Sales Representation and Service ASA's
- Shortest lead times in the industry
- Overnight delivery of spare parts
- Equipment designed for continuous operation
- Equipment designed for ease of service using non-proprietary parts



Configurable controls are adaptable to meet a variety of applications



Steam Sterilizers - Large Volume

PRIMUS steam sterilizers are configured for the sterilization of animal care products, including animal caging, bedding, feed, water bottles, enrichment, waste, and associated material handling equipment. All PRIMUS sterilizer chamber dimensions are sized for maximum capacity in order to meet or exceed vivarium throughput requirements and all sterilization applications. Reliable and simple to operate, PRIMUS sterilizers are also easy to service and maintain.

Vessel design

Vessel design features a stainless steel, fully-jacketed 316L chamber. The vessel is insulated and mounted on a steel frame, which offers adjustable feet on self-centering floor pads.

Applications

Sterilization of animal care products.

Key Features

- Color touch screen PLC controls
- Pre-programmed cycles for specific applications
- Pri-Mirror™ chamber and door finish
- Single and double door configurations
- Floor or pit mounted
- Utility conservation systems
- Chambers sized for maximum throughput
- Non-proprietary parts

Benefits of PRIMUS Large Volume Steam Sterilizers

Sterilization of bulk animal caging & supplies



Non-proprietary parts - US sourced for maximum uptime



Finished floor loading - ease of use & operator safety



Remote diagnostics for optimum uptime



Pri-Mirror™ chamber finish for ease of cleanability



Barrier installations ensure sterile environments



Dimensions

Model	Chamber Size W x H x D inches/mm	Chamber Capacity	Overall Size W x H x D inches/mm	Wall Opening W x H x D inches/mm	Fascia Size W x H inches/mm
J	26 x 63 x 48 660 x 1600 x 1219	46 ft ³ / 1288 L	40.25 x 109 x 70.13 1022.35 x 2768.6 x 1781.18	86 x 94 x 62.44 2184 x 2387.6 x 1585.98	88 x 95 2235 x 2413
K	26 x 63 x 76 660 x 1600 x 1930	72 ft ³ / 2040 L	40.25 x 109 x 98.13 1022.35 x 2768.6 x 2492.5	86 x 94 x 90.44 2184 x 2387.6 x 2297.18	88 x 95 2235 x 2413
L	35 x 57 x 48 889 x 1448 x 1219	55 ft ³ / 1569 L	52.31 x 96 x 67.75 1329 x 2438 x 1720.9	105 x 83 x 62.5 2667 x 2108 x 1587	107 x 84 2718 x 2134
M	35 x 57 x 60 889 x 1448 x 1524	69 ft ³ / 1962 L	52.31 x 96 x 79.75 1329 x 2438 x 2025.7	105 x 83 x 74.5 2667 x 2108 x 1892	107 x 84 2718 x 2134
N	35 x 57 x 86 889 x 1448 x 2184	99 ft ³ / 2812 L	52.31 x 96 x 105.75 1329 x 2438 x 2686.1	105 x 83 x 100.5 2667 x 2108 x 2553	107 x 84 2718 x 2134
O	49 x 57 x 86 1245 x 1448 x 2184	139 ft ³ / 3936 L	66.31 x 96 x 109.38 1684 x 2438 x 2778	133 x 83 x 104.12 3378 x 2108 x 2645	135 x 84 3429 x 2134
P	49 x 86 x 86 1245 x 2184 x 2184	210 ft ³ / 5939 L	73.81 x 137 x 109.75 1875 x 3480 x 2788	138 x 124 x 104.12 3505.2 x 3149.6 x 2645	140 x 125 3556 x 3175
Q	61 x 86 x 86 1549 x 2184 x 2184	261 ft ³ / 7393 L	85.81 x 137 x 109.75 2180 x 3480 x 2788	174 x 124 x 104.12 4420 x 3149.6 x 2645	176 x 125 4470 x 3175
S	37 x 86 x 86 939.8 x 2184.4 x 2184.4	46 ft ³ / 1288 L	40.25 x 109 x 70.13 1022.35 x 2768.6 x 1781.18	86 x 94 x 62.44 2184 x 2387.6 x 1585.98	88 x 95 2235 x 2413

Steam Sterilizers - Small Volume

PRIMUS® small volume steam sterilizers come in multiple chamber configurations for your application. Designed for simplicity in operation and serviceability.

Design

Vessel design features a stainless steel, fully-jacketed 316L chamber. The vessel is insulated and mounted on a steel frame, which offers adjustable feet on self-centering floor pads.

Rectangular chamber eliminates wasted space and reduces high utility costs common to cylindrical or elliptical designs. Chambers are polished to a mirror finish of <10 Ra. Surface finish can be just as critical in determining the corrosion resistance of austenitic stainless steel as the grade. Poor quality finishes can lead to disappointing performance of stainless steel. A highly polished surface will give the best performance in any specified environment.

Applications

Sterilization of animal care products including surgical instruments.

Key Features

- Color touch screen PLC controls
- Pre-programmed cycles for specific applications
- Pri-Mirror™ chamber and door finish
- Single and double door configurations
- Recessed or freestanding
- Vertical and hinged door options
- Utility conservation systems
- Chambers sized for maximum throughput
- Non-proprietary parts

Benefits of PRIMUS Small Volume Steam Sterilizers

Sterilization of animal caging & supplies



Non-proprietary parts - US sourced for maximum uptime



Space Saving: recessed or free-standing cabinet mounted



Remote diagnostics for optimum uptime



Pri-Mirror™ chamber finish ensures ease of cleanability



Barrier installations ensure sterile environments



Dimensions

Model	Chamber Size (W x H x L) inches/mm	Chamber Capacity	Overall Size (W x H x L) inches/mm	Wall Opening (W x H x L) inches/mm	Fascia inches/mm	Floor to Chamber
AA	16 x 16 x 26 406.4 x 406.4 x 660.4	3.9 ft ³ / 109L	25.38 x 74 x 35.94 644.6 x 1879.6 x 912.9	26 x 73 x 27.69 660.4 x 1854.2 x 703.3	30 W 762 W	38.50 977.9
A	20 x 20 x 38 508 x 508 x 965.2	8.8 ft ³ / 249 L	29.25 x 74 x 47.25 743 x 1879.6 x 1197.4	30 x 73 x 40.44 762 x 1854.2 x 1027.2	34 W 863.6 W	38.5 977.9
B	26 x 26 x 39 660.4 x 660.4 x 990.6	15.3 ft ³ / 1569 L	35.5 x 80 x 52.44 901.7 x 2032 x 1331.9	36 x 79 x 41.44 914.4 x 2006.6 x 1052.6	40 W 1016 W	32 812.8
C	26 x 26 x 49 660.4 x 660.4 x 1244.6	19.2 ft ³ / 543 L	35.5 x 80 x 62.44 901.7 x 2032 x 1585.98	36 x 79 x 51.44 914.4 x 2006.6 x 1306.5	40 W 1016 W	32 812.8
D	26 x 26 x 67 660.4 x 660.4 x 1701.8	26.2 ft ³ / 742 L	35.5 x 80 x 80.44 901.7 x 2032 x 2043.18	36 x 79 x 69.44 914.4 x 2006.6 x 1763.8	40 W 1016 W	32 812.8
E	26 x 36 x 39 660.4 x 914.4 x 990.6	21 ft ³ / 598 L	41 x 81 x 58.5 1014.4 x 2057.4 x 1485.9	76 x 80 x 50.9 1930.4 x 2032 x 1292.86	78 W x 81 H 1984.2 W x 2057.4 H	24 609.2
F	26 x 36 x 48 660.4 x 914.4 x 1219.2	26 ft ³ / 736 L	41 x 81 x 67.5 1014.4 x 2057.4 x 1714.5	76 x 80.4 x 59.9 1930.4 x 2032 x 1521.46	78 W x 81 H 1984.2 W x 2057.4 H	24 609.6
G	26 x 36 x 60 660.4 x 914.4 x 1524	33 ft ³ / 920 L	41 x 81 x 79.5 1014.4 x 2057.4 x 2019.3	76 x 80 x 71.9 1930.4 x 2032 x 1826.26	78 W x 81 H 1984.2 W x 2057.4 H	24 609.6
G.1	32 x 36 x 48 812.8 x 914.1 x 1219.2	32 ft ³ / 906 L	87 x 81 x 67.25 2209.8 x 2057.4 x 1708.2	88 x 80 x 62 2235.2 x 2032 x 1574.8	90 W x 81 H 2286 W x 2057.4 H	24 609.6
H	36 x 42 x 60 914.4 x 1066.8 x 1524	53 ft ³ / 1487 L	97 x 86 x 79.38 2463.8 x 2184.4 x 2016.3	100 x 85 x 74.19 2540 x 2159 x 1884.4	102 W x 86 H 2590.8 W x 2184.4 H	24 609.6
I	36 x 42 x 84 914.4 x 1066.8 x 2133.6	74 ft ³ / 2081 L	97 x 86 x 103.38 2463.8 x 2184.4 x 2625.9	100 x 85 x 98.19 2540 x 2159 x 2494	102 W x 86 H 2590.8 W x 2184.4 H	24 609.6

The brilliant Pri-Mirror® reflective chamber finish sets the highest standard for cleanliness.





**Greater flexibility
to meet today's
green initiatives**

Cage and Bottle Washers

LYNX Cage and Bottle Washers are heavy duty and reliable hydro-spray washers designed for ease of use, minimal maintenance, and highest cleanability of caging, bottles, debris pans, and other items used in the care of laboratory animals. These washers deliver high performance within a simplistic design. The system is provided with greater flexibility to meet today's "green" initiatives and high throughput demands. LYNX standardizes on non-proprietary parts on all equipment.

Construction

LYNX Cage and Bottle Washers are provided with all stainless steel doors (vertical or drop-down depending on model) with a glass window. Recirculated water is heated by a stainless steel steam coil to achieve guaranteed treatment temperatures. A color touch screen control panel provides a user-friendly interface for selecting, programming, and monitoring cycles. Unit is provided with a stainless steel treatment pump with a direct read pump pressure gauge.

Applications

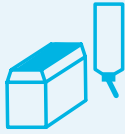
- Small animal caging
- Water bottle washing
- Ancillary equipment washing
- Enrichment washing

Key Features

- PLC control system with full color HMI Touch Screen with user configurable cycles
- Temperature guarantee
- Insulated construction
- Electrically or steam heated
- Standard and customizable loading racks
- Multiple door configurations to fit your space

Benefits of LYNX Cage and Bottle Washers

Small cage & bottle processing



Green features, low cost of ownership, fully customizable



ALAC compliant, operator safety features



180° guarantee temp, fast - efficient cycles



Ease of operation, intuitive programming screens



Factory direct & authorized service partner support



Dimensions

Model	Standard Chamber Size (W x H x L) inches	Standard Unit Size (W x H x L) inches	Door Type
302LX	22 x 32 x 34	46 x 80 x 40.5	Vertical Rise Door
310LX	48 x 32 x 34	72 x 82 x 39	Vertical Rise Door
320LX	48 x 32 x 34	72 x 82 x 40	Drop-down Door
320RS ¹	48 x 39 x 36	70 x 73 x 42	Drop-down Door
330LX	48x 32x 48	72 x 82 x 52.5	Vertical Rise Door
340LX	48 x 32 x 48	72 x 82 x 58	Drop-down Door
340RS ²	48 x 39 x 52	70 x 73 x 58	Drop-down Door

1) 320RS (formerly SCIENTEK SW5100/SW5200)

2) 340RS (formerly SCIENTEK SW5500)

Cage and Rack Washers

LYNX Cage and Rack Washers are heavy duty, large capacity reliable hydro-spray washers designed for ease of use, minimal maintenance, and highest cleanability of caging, bottles, racks, debris pans, and other items used in the care of laboratory animals. These washers deliver high performance within a simplistic design. The system is provided with greater flexibility to meet today's "green" initiatives and high throughput demands. LYNX standardizes on non-proprietary parts on all equipment. Pit mounting is standard.

Construction

LYNX Cage and Rack Washers are provided with heavy-duty stainless steel doors with glass windows. Recirculated water is heated by a stainless steel steam coil to achieve guaranteed treatment temperatures. A color touch screen control panel provides a user friendly interface for selecting, programming, and monitoring cycles. Units are provided with stainless steel treatment pumps with direct read pump pressure gauges.

**For efficient cleaning of items
used in the care of laboratory animals**



Applications

- Rodent and small animal cage washing
- NHP caging washing
- Bulk truck and material handling washing
- Ancillary equipment washing
- Enrichment washing
- Pan washing

Key Features

- PLC control system with full color HMI Touch Screen with user configurable cycles
- Temperature guarantee
- Modular construction
- Rotary or oscillating spray delivery systems
- Multiple door window configurations
- Floor, low-profile and pit mounted units available

Benefits of LYNX Cage and Rack Washers

Large batch cage processing



Green features, low cost of ownership, fully customizable



ALAC compliant, operator safety features



180° guarantee temp, fast - efficient cycles



Ease of operation, intuitive programming screens



Factory direct & authorized service partner support



Dimensions

Model	Standard Chamber Size <i>W x H x D inches</i>	Standard Unit Size <i>W x H x D inches</i>	Opt. Door Widths <i>inches</i>	Opt. Door Heights <i>inches</i>	Opt. Chamber Lengths <i>inches</i>
410LX	46 x 85 x 92	89 x 104 x 93-130	36, 48, 54	88, 93, 96	85, 88, 104, 111, 116, 122
410RS	48 x 88 x 96	88 x 95 x 98-116	36, 42, 46	74, 82	90, 100, 108
420LX	46 x 85 x 141	84 x 104 x 149	36, 48, 54	88, 93, 96	135, 146
420RS	48 x 88 x 128	62.75 x 95 x 132	36, 42, 46	74, 82	120
430LX	46 x 85 x 188	89 x 104 x 196	36, 48, 54	88, 93, 96	152, 164, 170, 176, 188+
430RS	48 x 88 x 188	62.75 x 95 x 192	42, 46	74, 82	154, 164, 170
450LX	72 x 85 x 141	122 x 104 x 149-226	60, 84	88, 93, 96	All 85- 188+
450RS	68 x 88 x 128	83.25 x 95 x 132	62, 74, 84	90, 93, 96	109, 140, 150, 160, 165
455LX	Dual 46 x 85 x 92	147 x 104 x 93-196	36, 48, 54	88, 93, 96	All 85- 188+

1) 410RS (formerly SCIENTEK SW6100/6200/6300)
2) 420RS (formerly SCIENTEK SW6700)

3) 430RS (formerly SCIENTEK SW6900)
4) 450RS (formerly SCIENTEK SW6700W)



LYNX Washers
are engineered
and constructed
to last



Tunnel Washers

LYNX Cage Tunnel Washers are heavy-duty conveyORIZED hydro-spray washers designed to clean and dry caging, lids, feeder bowls, bottles and other items used in the care of laboratory animals. The 500 Series Washers are available in 7 different belt widths, maximizing cage processing time and efforts. Flexible design is available with a wide array of options and configurability to meet customer's specific requirements. LYNX standardizes use of non-proprietary parts on all equipment.

Construction

LYNX Tunnel Washers are built to perform under the most rugged and aggressive environments with robust design and construction. The durable stainless steel belt is manufactured to withstand the weight and impact of heavy bottle wash racks and other large objects requiring processing. The system is designed to minimize water usage by reusing 100% of final rinse water in the pre-wash and tank top-off process. Recirculated water is heated by stainless steel steam coils to maintain and achieve guaranteed treatment temperatures. A color touch screen control panel provides a user-friendly interface for selecting, programming, and monitoring cycles.

Applications

- High through put continuous cage processing
- Ancillary equipment washing
- Enrichment washing

Key Features

- PLC control system with full color HMI Touch Screen with user configurable cycles
- Temperature guarantee
- Integral unitized construction
- Electrically or steam heated
- Multiple drying lengths
- Integrable bedding dump station
- Integrable vacuum dump station
- Integrable clean bedding dispensers

Benefits of LYNX Tunnel Washers

Continuous high volume cage processing



Green features, low cost of ownership, fully customizable



ALAC compliant, operator safety features



180° guarantee temp, high through-put cleaning



Ease of operation, intuitive programming screens



Factory direct & authorized service partner support



Dimensions

Model	Standard Tunnel Opening W x H inches	Standard Unit Size* W x H inches	Washer Lengths* feet	Standard Belt Width inches	Opt. Tunnel Heights* inches
524LX	25 x 25	61 x 85	15-24 (with dryer)	24	18
524SW ¹	24 x 24	66 x 73	15-28 (with dryer)	24	NA
530LX	31 x 25	67 x 85	15-24 (with dryer)	30	18, 25
536LX	37 x 25	73 x 85	15-24 (with dryer)	36	18, 25, 36
536SW ²	36 x 24	64 x 71	15-28 (with dryer)	36	NA
542LX	43 x 25	79 x 85	15-24 (with dryer)	42	18, 25
548LX	49 x 25	85 x 85	15-24 (with dryer)	48	18, 25
554LX	55 x 25	90 x 85	15-24 (with dryer)	54	18, 25

1) 524SW (formerly SCIENTEK SW2524)

2) 536SW (formerly SCIENTEK SW2536)

*Washers can be designed to any size to meet your application requirements. Overall size may vary depending on options.

Bedding Dispensers

LYNX offers several Bedding Dispenser options. The LYNX Model 710LX Bedding Dispenser is a semiautomatic unit designed to dispense bedding materials into two standard mouse boxes simultaneously when they are placed into position within the filling area. The LYNX Series of Automatic Bedding Dispensers (available in various sizes) are conveyorized units designed to automatically dispense bedding materials¹ into animal cages as they are conveyed through the filling chamber. All LYNX Bedding Dispensers are capable of handling most free flowing solid bedding that is commonly used in the animal care industry. The bedding volume is adjustable to accommodate various bedding depths and sizes of cages.

Construction

LYNX Bedding Dispensers are constructed of heavy duty 304 stainless steel. The 710LX is ergonomically friendly and includes a workstation to handle either two standard mouse or rat cages. The 724LX-748LX models are provided with soft, protective rubber coated rollers to safeguard cages as they are being inverted onto the roller conveyor. Units are designed for left or right hand controls and hopper access.



Dimensions

Model	Workstation Opening W x H - inches	Standard Unit Size W x H x D - inches
710LX	27 x 14	43 x 93 x 30
724LX	30 x 12	74 x 67 x 96
730LX	36 x 12	80 x 67 x 96
736LX	42 x 12	86 x 67 x 96
742LX	48 x 12	92 x 67 x 96
748LX	54 x 12	98 x 67 x 96

Applications

- High or low volume bedding dispensing
- Handles multiple bedding types

Key Features

- Operator control panel
- Automatic controls*
- Left of right hand controls
- Accurate dispensing
- Adjustable fill volumes

¹ Consult your representative for bedding material compatibility.

* Not available on 710LX

Benefits of LYNX Bedding Dispensers

Automatic cage bedding for multiple bedding types



Adjustable bedding volume to fit your requirements



Free-standing or rain-fall technologies



Factory direct & authorized service partner support





Bottle Fillers

LYNX Feeder Bottle Fillers are manifold type fillers designed for filling basket loads of feeder bottles used in the care of laboratory animals. LYNX Bottle Fillers provide uniform water delivery using either manual or automatic controls. Units are designed to accept common bottle basket configurations (24, 25 or 36 position). Optional single or double header filling operation is available on some models. All LYNX Bottle Fillers are designed for ease of cleaning, low maintenance, and long life.

Construction

LYNX Bottle Fillers are constructed of a sturdy 304 stainless steel tubular design. Fillers come equipped with leveling legs and quick disconnect filler manifold. The individual stainless steel spray jets are positioned to fill bottles of various types and configurations. Some models have an integral stainless steel backsplash. Additional optional headers available.

Applications

Water bottle basket filling.

Key Features

- Leveling legs
- Various models to fit your requirements
- Handles standard bottle basket configurations
- Interchangeable headers to accommodate different sizes
- Direct acidification injection

Benefits of LYNX Bottle Fillers

High volume bottle filling



Customizable construction to fit user space requirements



Low maintenance for maximum uptime



Dimensions

Model	Standard Dimensions <i>W x H x D</i> <i>inches</i>	Standard Load Length <i>inches</i>	Opt. Load Length <i>inches</i>
100LX	24 x 48 x 41	38	NA
100BF ¹	18 x 44 x 28	22	NA
110LX	72 x 58 x 32	72	48, 96
110BF ²	72 x 34 x 29	23	48, 56, 96
170LX	<i>No Cart/header up:</i> 26 x 54 x 9.75 <i>Cart/header down:</i> 26 x 42 x 32.13	NA	NA

1) 100BF (formerly SCIENTEK SWBF-25)

2) 110BF (formerly SCIENTEK SWBF-36)



Decontamination Chambers

The LYNX 220BG Decontamination Chamber is a dedicated air-tight chamber designed for use with vapor or gaseous sterilants for high-level disinfection or sterilization of heat and moisture sensitive items at ambient temperatures; including material handling, caging, computers, electronics, medical devices, instrumentation, and other miscellaneous items. User can choose hydrogen peroxide or chlorine dioxide sterilants dependent upon product configuration.

Smart Flow System

The LYNX Smart Flow System gives you the ability to choose which end of the decontamination chamber is the dirty side and which is the clean side. The unit can be reconfigured at any time to be used as a pass-through or single door decontamination chamber. Smart Flow System configuration is easily programmable through the PLC under supervisor password.

Construction

Decontamination Chambers are completely constructed of 304 stainless steel with single and double door pass-thru configurations. The unit may be pit mounted or floor mounted with low profile ramps for ease of loading and unloading. A color touch screen operator interface provides ease of use controls of all processes along with data logging for record keeping.



**LYNX Smart Flow System
offers maximum
user flexibility**



Applications

Decontamination of heat and moisture sensitive product loads.

Key Features

- Modular construction
- Gas/vapor ports
- Active seal air tight door(s)
- Micro-computer control system
- Single door or pass-through configurations

Dimensions

Model	Standard Chamber Size <i>W x H x D</i> <i>inches</i>	Avail. Door Widths <i>inches</i>	Avail. Door Heights <i>inches</i>	Avail. Door Lengths <i>inches</i>
220BG	48 x 85 x 92	36, 48	85, 94, 96	85, 88, 92, 104, 111, 116, 122, 135
240BG	48 x 85 x 141	36, 48	85, 94, 96	141, 146, 152, 164, 170, 176, 188+

Benefits of LYNX Decontamination Chambers

Decontamination of moisture/
heat sensitive products



Common PLC control
with data logging



Smart Flow System for
containment applications



Choice of hydrogen peroxide
and/or chlorine dioxide



Integral safety
features



Misting Tunnels

LYNX 900 Series SaniMister Misting Tunnels are designed to significantly reduce harmful contamination by killing viruses and other bio-burden from packaging and other items to be introduced into your facility. The SaniMister Misting Tunnel produces and distributes a fine mist of disinfectant completely across and around the outer surfaces of the items processed.

The SaniMister is self contained, portable and designed to be easily moved within a facility. Four 5 inch stainless steel swivel lock casters allow smooth transfer throughout the building. The SaniMister is also available with a Bio-Door for permanent pass through wall installations.

Design

The conveyor is provided with a DC drive motor that has a range of 0 - 60 feet per minute. Optimum conveyor speed for sanitizing is generally between 30 - 50 feet per minute, depending upon product being conveyed. The SaniMister housing is constructed entirely of corrosion resistant materials. Available as stand-alone or pass-through configuration.



Benefits of LYNX Misting Tunnels

Decontamination of products entering a vivarium/barrier



Load & unload conveyors for ease of use



Applications

Full automatic, 360° decontamination of:

- animal care items entering from a facility shipping and receiving area into the vivarium
- products entering a barrier facility
- bedding, caging, and vivarium supplies



Model	Tunnel Opening W x H inches	Unit Size W x H inches
920LX	20 x 20	33 x 59 x 60
924LX	24 x 24	37 x 63 x 60
928LX	28 x 28	41 x 67 x 60

Designed to be easily moved within a facility

Full 360° coverage for decontamination exposure



Simple operation via push button start



Recess mounted for maintaining containment



Key Features

- Stainless steel construction
- Adjustable spray volume
- 3 standard chamber sizes
- Integral fill funnel
- Separate waste and clean chemical tanks
- Side windows for chemical level observation



Necropsy Solutions

CSI Jewett manufactures a wide range of Necropsy Workstations to fit all your needs. All models are well-suited for tissue preparation, specimen examination, as well as other procedures. Stainless steel construction assures longevity and durability. Additionally large radius corners and a polished work surface minimize fluid and tissue collection and allow for easy cleaning. Our ventilated work surface helps reduce airborne particles commonly found in this area, keeping your lab and employees safe.

Sinks and Dissection Solutions

Large Animal Necropsy Table

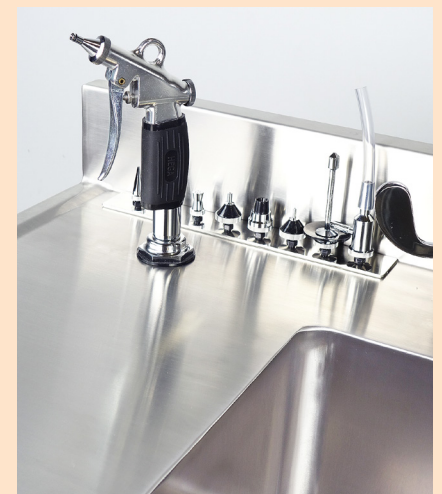
CSI Jewett's Large Animal Necropsy Table is custom designed to work where table strength and ease of accessibility are required. The stainless steel construction makes our tables dependable and long-lasting, as well as easy to clean.

The user is able to work at the center of the U-shaped design during procedures, all while having ease of access to the central regions of large animals.



Utility and Processing Sinks

No matter your application, we can provide a utility or processing sink to fit your specific requirements.



Applications

- Animal dissection
- Tissue processing
- Reduced exposure to fumes

Key Features

- Lightweight aluminum design permits one-person operation
- Sturdy construction and design
- Heavy-duty, rubber-tired, ball bearing casters for ease of transport

Benefits of CSI Jewett Necropsy Equipment

Constructed from high grade materials for product longevity



Numerous configurations to fit specific facility requirements



Engineered to increase ergonomics & reduce maintenance



Body Lifting and Transport Solutions for Large Animals

Lifters

The SR821 **Overhead Transfer Lifter** is a full system approach to large animal transfers. Animals can be conveniently moved to and from the refrigerator, table or transfer cart. Available with a wide range of attachments. Shown with Body Scoop Lift Attachment.

The **SR2154 Scissor Lift** has a hydraulic lift system with a 600 lb capacity and lifting range from 12.5" to 71.5". Standard operation is via foot pedal.



Transport Carts

CSI Jewett Transport carts provide a simple solution for any facility. Equipped with large swivel casters, these lightweight carts can easily transport bodies within your facility with ease.

When durability, table strength and user accessibility are needed, choose CSI Jewett

Warming Cabinets

CSI Jewett warming cabinets are designed for use in vivariums for warming blankets and solutions. The cabinet temperature is controlled in the range 90°F -170°F.

Design

Warming cabinets come in a wide variety of sizes and configurations to meet your exact needs. All model cabinets are available with solid or dual pane, tempered glass doors and 18 or 24 inch cabinet depths. Our digital controls feature easily programmable settings and independent controls on dual compartment models. Constructed of stainless steel with individual display and controls per cabinet. They offer many standard features and available options.



Dimensions

Model	Exterior Cabinet Dimensions <i>inches</i>			Interior Cabinet Dimensions <i>inches</i>			Interior Volume <i>cu ft</i>	Weight <i>lbs</i>
	<i>W</i>	<i>D</i>	<i>H</i>	<i>W</i>	<i>D</i>	<i>H</i>		
CWC-15	30	24	28	25.5	17.5	15.5	4 ft ³	152
CWC-28	30	24	41	25.5	17.5	28.5	7.4 ft ³	211
CWC-41	30	24	54	25.5	17.5	41.5	10.75 ft ³	263
CWC-61	30	24	74	25.5	17.5	61.5	15.9 ft ³	510
CWC-1515	30	24	48	25.5	17.5	15.5	4 ft ³	310
				25.5	17.5	15.5	4 ft ³	
CWC-1528	30	24	61	25.5	17.5	15.5	4 ft ³	363
				25.5	17.5	28.5	7.4 ft ³	
CWC-1541	30	24	74	25.5	17.5	15.5	4 ft ³	414
				25.5	17.5	41.5	10.75 ft ³	
CWC-2828	30	24	74	25.5	17.5	28.5	7.4 ft ³	422
				25.5	17.5	28.5	7.4 ft ³	

Benefits of CSI Jewett Warming Cabinets

Precise temperature controls
for product stability



Simple, user
friendly controls



Multiple sizes to match
your needs & budget



Stainless Steel Solutions

Casework

CSI Jewett stainless steel casework, instrument cabinets and work tables are designed to provide maximum convenience and versatility. All floor and wall model cabinets come complete with stainless steel adjustable shelves, hinged or sliding (glass or solid) doors, and security locks.

Our custom fabrication department is prepared to design and manufacture instrument cabinets and casework to your requirements and specifications. Constructed of 18 gauge type 304 stainless steel. We offer options for lighting, clear or frosted glass, ventilation, door locks, pass-through configuration, built in sinks, refrigeration units and seismic anchoring.

Custom fabrication allows for design and manufacture of cabinets and casework to your specific requirements

Pass-Through Windows and Cabinets

CSI Jewett offers a complete line of pass through devices from single door pass-through windows to negative pressure walk-through enclosures. Fabricated of all stainless steel, they offer glass viewing windows and door interlocks. Available in vertically and horizontally sliding configurations, pass-through cabinets can be configured with ventilation, HEPA filtration and many other options. Both are available in multiple sizes or can be built to your custom specifications.

Applications

- Tissue and specimen storage
- Equipment storage
- Stainless counters for laboratory work surfaces

Key Features

- All stainless construction
- Heavy duty hardware
- Counters with full welded sinks and sound deadening

Benefits of CSI Jewett Stainless Equipment

Corrosion resistance against chemicals & environment



Engineered for durability & cleanability



Sizes & configurations to match your requirements



CSI Jewett has over 100 years of quality product experience





**CSI Jewett
consults with
you for your cold
storage needs
from initial
inquiry to final
installation**

Cold Rooms

CSI Jewett walk-in refrigerator and freezer systems provide high volume storage at precisely controlled temperatures. These units are purposefully designed for morgue, lab and reagent storage.

All CSI Jewett morgue refrigerators and freezers can be customized to your unique needs, usage and facility requirements. Our planning service is available to help you define equipment and space coordination needs for present and future demands. CSI Jewett handles walk-ins from initial inquiries through final installation to provide the exact configuration required. Walk-in refrigerators or freezers are available in many design configurations with numerous standard and optional features.

Many years of quality engineering and manufacturing craftsmanship have made CSI Jewett the leading manufacturer of refrigerators and freezers. With our unmatched expertise, you know that you can count on CSI Jewett to produce refrigerators and freezers which excel in ease of operation, temperature uniformity, energy efficiency and long-term dependability.

Walk-in coolers and freezers are constructed of prefabricated panels to allow convenient and accurate field assembly and future enlargement by the addition of panels.

Applications

- Cadaver / specimen storage
- Reagent storage
- Temperature controlled work area

Key Features

- Exterior fronts of heavy-gauge, polished stainless steel
- Sides, backs, tops, interior walls and ceiling of stucco embossed aluminum
- Hermetically sealed compressors and quality-engineered refrigeration systems provide operation temperature uniformity
- Fast response to changes in cabinet temperature, ambient conditions, product loadings and door openings

Benefits of CSI Jewett Cold Rooms

Storage for cadavers, specimens & reagents



Engineered with green features



Custom size configurations



Precise temperature control



Temperature monitoring for verification



Integration into Building Management Systems (BMS)



Upgrades

The lifecycle of capital equipment is often determined by the ability to maintain your investment. SPIRE offers everything from control system to complete system upgrades. Many times the lifecycle is cut short not by the manufacturer but the parts supply chain. Offering a seamless upgrade to a common user interface, allows your upgraded equipment to operate as intended, meeting specific application requirements.

SPIRE upgrades sterilizers and washers from any manufacturer in the Life Science marketplace. Additionally our use of non-proprietary parts provides ease of access and lower cost of ownership.

When purchasing your SPIRE vivarium equipment we have the ability to upgrade your current equipment control platform to mirror that of your new equipment.

Advantages of Upgrading Your Equipment

- Extension of equipment life
- Integration with Building Management Systems (BMS)
- Flexibility of cycles/improved performance
- Process changes - improve cycle performance
- Standardization of control platforms
- Upgrade to current standards
- Sustainability and energy savings
- Reduce service calls



Sterilizer Upgrades

Upgrades are available for all major sterilizer brands. Upgrades include:

- Non-proprietary PLC
- Full-color, touch-screen HMIs
- Pre-wired control box
- Cabling to HMIs, inputs, and outputs
- Printer and data logging options
- Plumbing options
- One year warranty for included componentry

Note: Sterilizer chamber and door not covered under warranty. Sterilizer must be assessed for viability.



Washer Upgrades

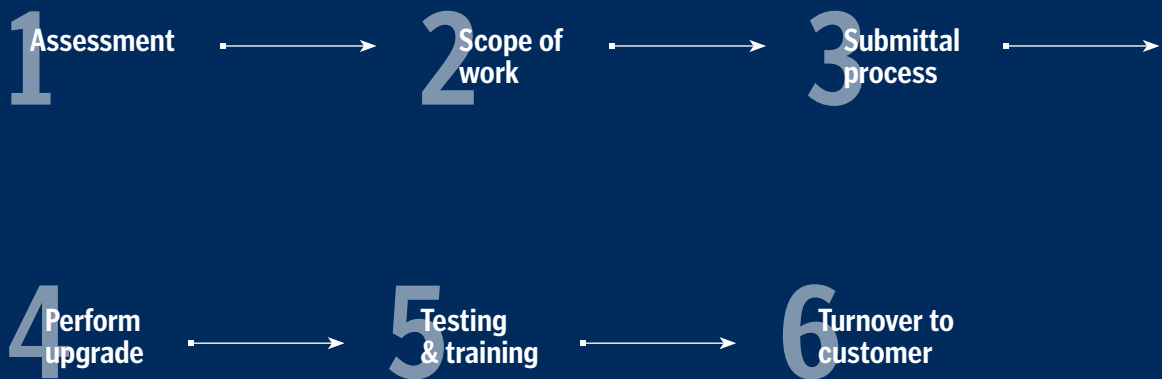
Upgrades are available for all major washer brands. Upgrades include:

- Non-proprietary PLC
- Full-color, touch-screen HMIs
- Pre-wired control box
- Cabling to HMIs, inputs, and outputs
- Printer and data logging options
- Plumbing options
- One year warranty for included componentry

Note: Wash chamber and door not covered under warranty. Washer must be assessed for viability.

SPIRE partners with you
for long lasting equipment solutions

Steps to the Upgrade Process



Benefits of Upgrades

Significantly shorter project times over replacement

Typically budgeted from operations, not a capital purchase

User friendly & ease of maintenance via standardized control platform

Installation and Service

SPIRE's experienced installation team handles every aspect of your equipment installation to ensure proper placement, functionality, and successful commissioning. Our project management team works with contractors, riggers and trades to provide specific milestones and to assure deliveries are met.

SPIRE Authorized Service Agents are specially trained on all SPIRE Equipment to ensure proper diagnostics, servicing of equipment with non-proprietary parts, as well as preventative maintenance.

All SPIRE equipment has the ability to monitor cycle related data on the performance of each unit as a standard feature. This would include valve counters, run-time monitoring, and other critical instrumentation to give cycle specific history of each unit. With this information a facility can better schedule maintenance functions specific to the actual run time of the equipment, maximizing uptime.

Our highly trained service specialists provide periodic inspections and adjustments to ensure low-cost, peak performance, reliability and low cost of ownership. SPIRE representatives can provide information regarding annual maintenance agreements, and preventative maintenance.

Project Milestones

- Site pre-installation inspection
- Site supervision of unloading and rigging
- Reassembly of MEP components removed for knockdown installation
- Setting equipment in place
- Coordination with on site contractors for MEP connections
- On site equipment testing
- Startup and user training



SPIRE at your side



Additional Services

Preventative Maintenance

Trust SPIRE to be your complete preventative maintenance partner in any capacity needed. From a simple gasket replacement or valve rebuild, to on-site, full-service maintenance, testing, and qualification, SPIRE delivers preventative maintenance and service solutions suited to your facility and operations.

Training and Support

Beyond ensuring your equipment works as intended, SPIRE is dedicated to helping your team maximize uptime and simplify qualification processes. Through the InSPIRE Institute, SPIRE can train your in-house team to perform critical maintenance. Or, if you'd rather fully outsource your maintenance regimen, SPIRE can be on site as often as needed for routine upkeep.

With SPIRE equipment and service, you'll never be locked into costly maintenance regimens and obscure part requirements.

www.SPIRE-is.com

SPIRE Integrated Solutions
Telephone: 877 679 7800
E-mail: sales@SPIRE-is.com

Check out SPIRE's other Equipment Offerings and Industry Application Solutions

SPIRE is your single source for all your application needs.
Learn more about our other solutions:



Healthcare



Laboratory



Biocontainment

Vivarium Solutions Brochure_M1066_1.00 2021-0523